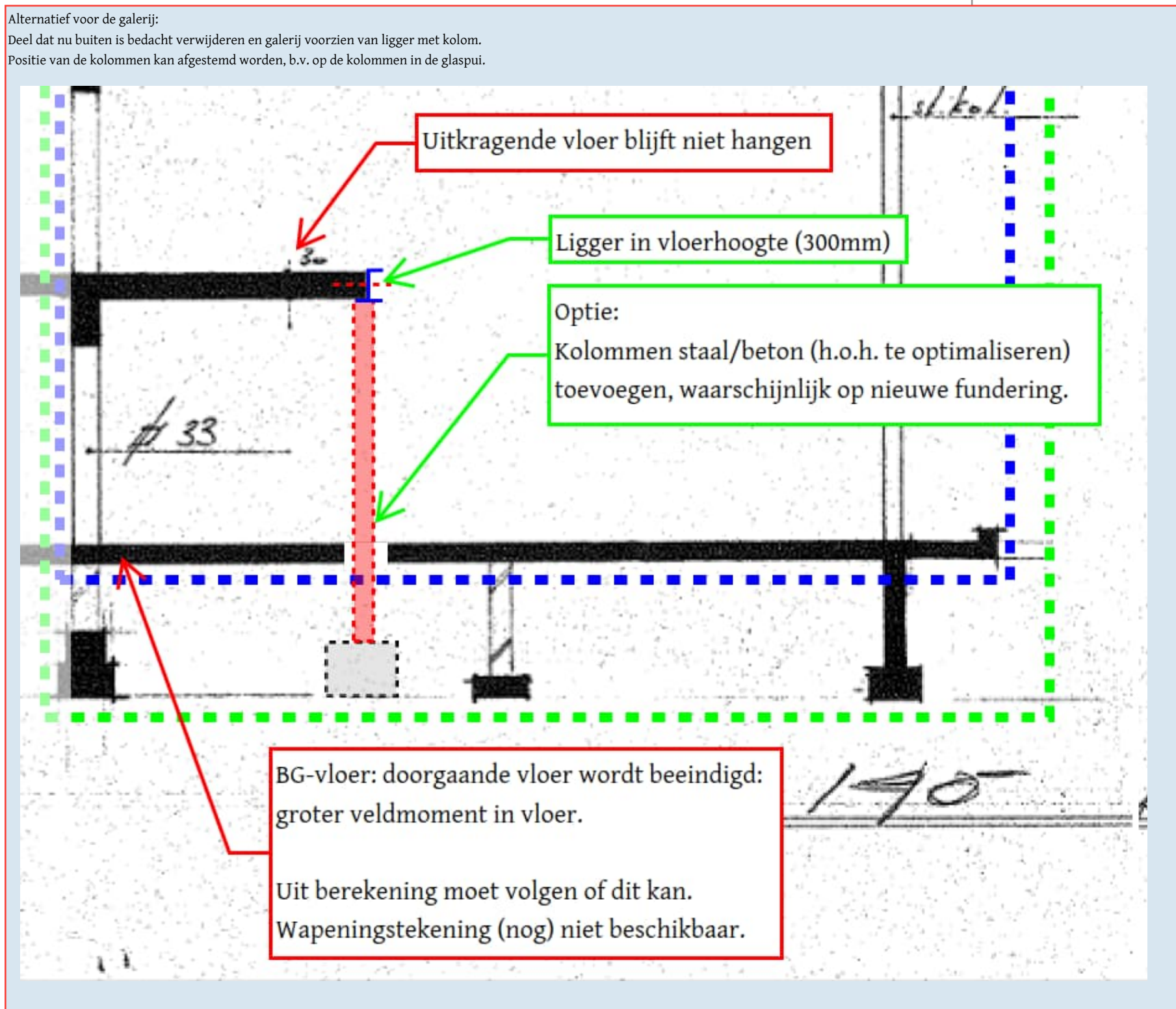
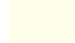






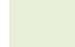


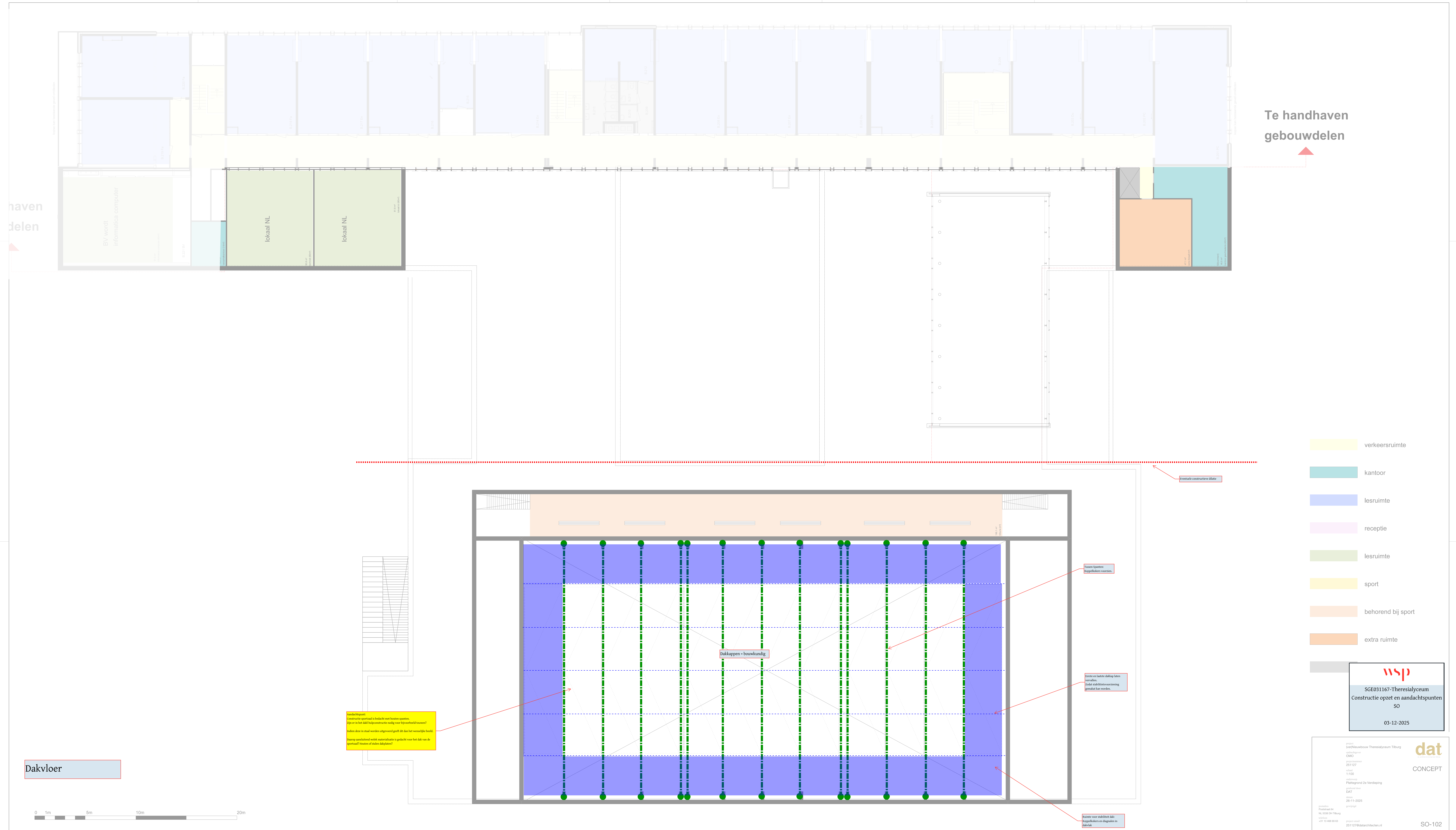
SGE031167-Theresialyceum

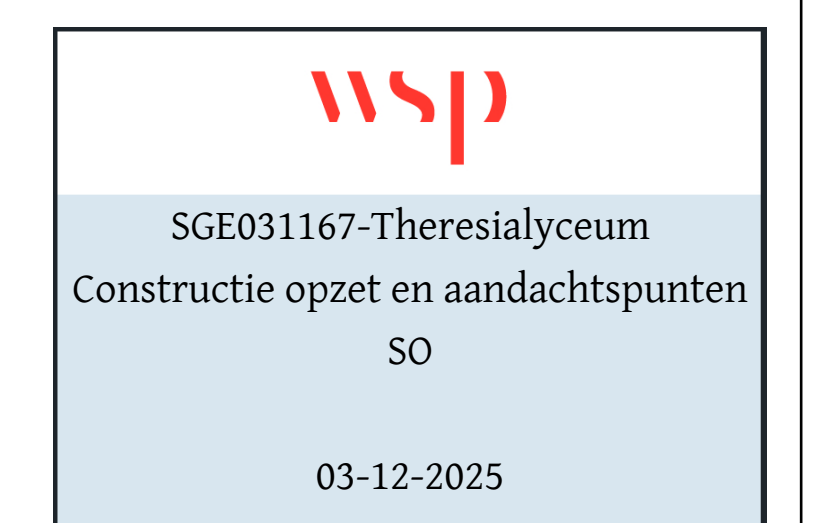
Constructie aanzet en aandachtspunten

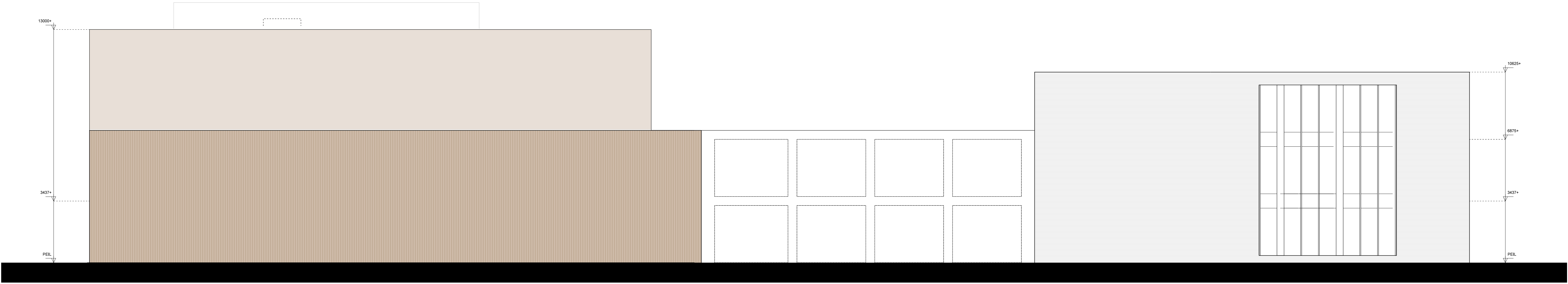




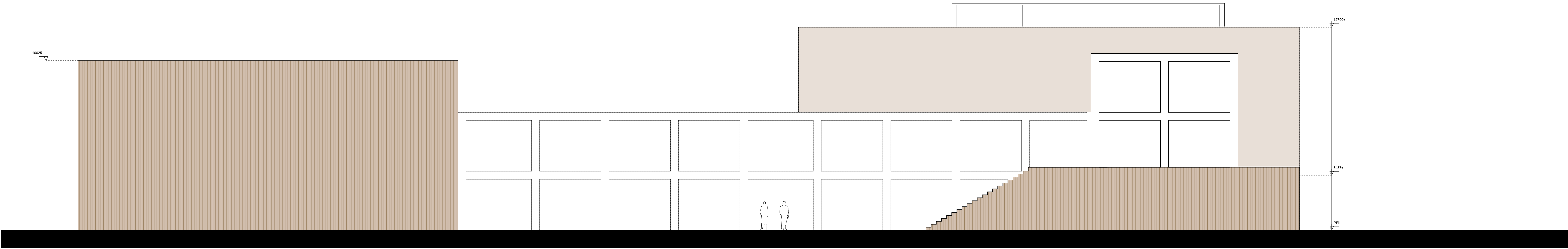
- | | |
|---|--------------------|
|  | verkeersruimte |
|  | kantoor |
|  | lesruimte |
|  | receptie |
|  | lesruimte |
|  | sport |
|  | behorend bij sport |
|  | extra ruimte |





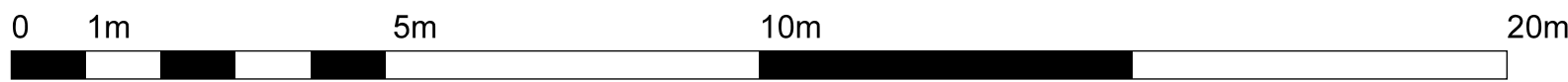



Voorgevelaanzicht Professor Cobbenhagenlaan (zuid)



Achtergevelaanzicht Sportweg (noord)

ramen en dichte delen nog te ontwerpen





SGE031167-Theresialyceum

Constructie opzet en aandachtspunten

SO

03-12-2025

project

(ver)Nieuwbouw Theresialyceum Tilburg

opdrachtgever

OMO

projectnummer

251127

schaal

1:100

ontwerper

Gevelaanzichten Noord en Zuid

getekend door

DAT

datum

26-11-2025

getekend

postadres

Ruststraat 64

NL 5038 DH Tilburg

telefoon

+31 13 468 89 63

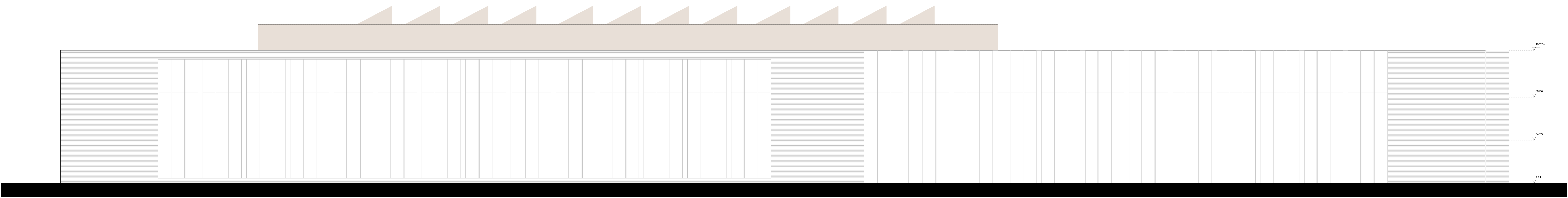
project email

251127@datarchitecten.nl

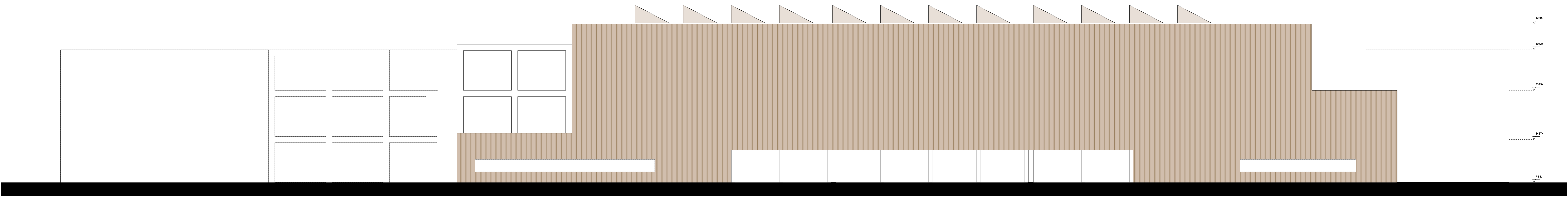


CONCEPT

SO-200

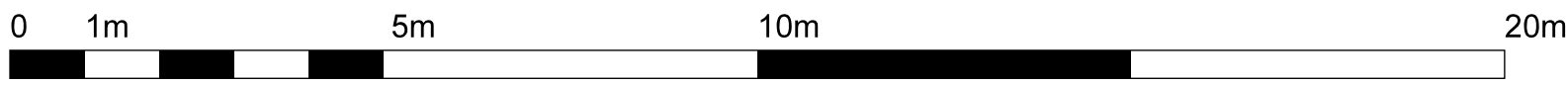



Zijgevelaanzicht Reitseplein (oost)



Zijgevelaanzicht gymzaal (west)

ramen en dichte delen nog te ontwerpen





SGE031167-Theresialyceum
Constructie opzet en aandachtspunten
SO

03-12-2025

project
overnamebouw Theresialyceum Tiburg

ontwerper
OMG

ontwerper
SGE031167

schaal
1:100

ontwerp
Gevelaanzichten Oost en West

gepland door
DAT

datum
26-11-2025

ontwerper
gsm/gsl

ontwerper
NL 2008 ON Tiburg

telefoon
+31 13 498 89 62

projectnaam
SGE031167-Theresialyceum



CONCEPT

SO-201